



AGROECOLOGY
PARTNERSHIP

Webinar for applicants

Integrating environmental, economic and social perspectives in assessing the performance of agroecology. Value-chain and policy implications

Call office



Co-funded by
the European Union

13/12/2024



Agenda



Welcome

09:00 – 09:15, Nicolas Tinois (Jülich, call office)



Scope and topics

09:15 – 10:00, Florence Jacquet (ANR) & Benjamin Sanchez (AEI)



How to build your consortium

10:00 – 10:15 Daniela Piaz Barbosa Leal (Jülich, call office)



Coffee break

10:15 – 10:30



Call procedure

10:30 – 11:00 Nicolas Tinois (Jülich, call office)



Submission tool

11:00 – 11:15, Ulrike Ziegler (Jülich, call office)



FAQs from slido

11:15 – 11:55 call office



Winner of the quiz and closure

11:55 – 12:00 Nicolas Tinois





01

Welcome

Nicolas Tinois



© Image Credits



AGROECOLOGY in a nutshell

Team-up and unlock the transition to agroecology so that farming systems are resilient, productive and prosperous, place sensitive, as well as climate, environment, ecosystem, biodiversity and people-friendly by 2050

- **Duration: Jan 2024 to Dec 2034 (10 Years)**
- **Pool resources of EU and states/regions**
 - Mobilisation of 300 M€ from EU and partners over 10 years (50 % co-fund)
 - In-kind: research and networking activities
 - In-cash: up to 7 transnational calls for proposals
- **72 partners from 26 countries/regions**
 - RFOs: National/Regional Authorities, ministries, Funding agencies → Funding agencies
 - RPOs: Research performing organisations, e.g. universities and research institutes
- **Coordination: Project management Jülich (DE)**
ptj-agroecology-secretariat@fz-juelich.de
- **Co-coordination: Agence National de la Recherche (FR)**





This call is NOT a Horizon Europe call for proposal but a co-funded call implemented in the framework of the partnership AGROECOLOGY:

- **Eligible countries®ions** = only countries®ions where also funders participate in this call.
- **Funds** = provided by funders participating to this call, so grants are negotiate bilateral between applicant/beneficiary and funder.
- **EU-Top up/co-fund principle** = provided to the funders to increase their individual budget for funding & in particular optimise amount of successful proposals. Funding body is the individual funder who provides funds to this call.
- **Funder** = funders are listed in the call document.
- **Who is your funder?** Look which funder is listed from your country/region, check the specific regulation, choose the one you are eligible to receive funds from.

Who to contact and where to find information



Call office
ptj-agroecology-call-office@fz-juelich.de

FCP
Annex IX

Submission website

- ✓ [https://agroecology.ptj.de/call2:](https://agroecology.ptj.de/call2)
- ✓ Any updates will be announced here!
- ✓ Check on regular basis on updates of the funder regulations
- ✓ Templates provided here: CV, work plan and letter of commitments
- ✓ Partnering tool to get connected

Further reading

- ✓ <https://www.agroecologypartnership.eu/>
- ✓ [Strategic Research and Innovation Agenda](#)





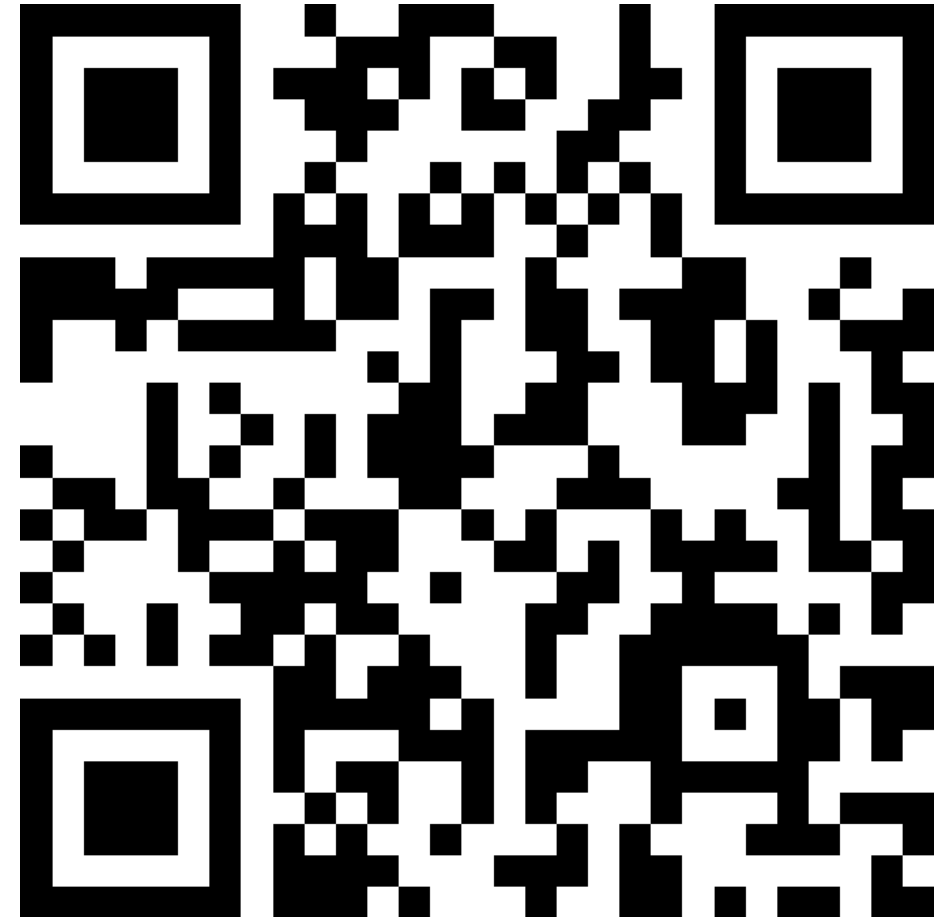
www.slido.com
#1580208

Questions

- Slido will be used (see QR code) or slido.com and code
- Ask your questions in slido
- Look for questions already asked and rank them
- Questions will be answered during Q&A session from top (high ranked) to down (low ranked)
- Questions will also be addressed in our FAQ which will be compiled following this webinar
- You are able to slightly edit your questions, but not able to delete them

Slido

- Now testing the system
- Later we are testing you in a quiz
- www.slido.com : #1580208
- If you do not wish to see your name, please use an alias





02

Scope and expected impacts of the call

Florence Jacquet, ANR (FR)



© Image Credits



CONTEXT

- The European Green Deal, F2F strategies, Biodiversity Strategy, Action Plan for organic production
- Agroecology: an approach to accelerate the transition to more sustainable agriculture
- Tension between current challenges, between today's private goods and tomorrow's public goods

AGROECOLOGY Partnership

- Promote agroecology through an approach based on Living Labs (LL) and research infrastructures
- Agroecology at the interface between agronomy and ecological sciences, with contributions from social sciences
- Agricultural practices as well as transformation of agri-food value chains





Integrating environmental, economic and social perspectives in assessing the performance of agroecology. Value-chain and policy implications

- The assessment of the benefits of agroecological approaches is essential for a better recognition of agroecology by the agricultural sector, the market, and by policy-makers.
- The evaluation of the performance of agroecology must be addressed by integrating environmental, climate, economic, and social dimensions.
- The value chains upstream and/or downstream of agroecological production system, and the private and public incentives able to support the transition should be addressed to foster the transition.





- Practical-oriented knowledge, **tools and/or innovations available to farmers and the sector**, contribute to uptake of agroecological practices at local, regional and national scales.
- **Increased knowledge, knowledge transfer and capacity of farmers** and agricultural advisors to implement agroecological practices.
- **Increased socio-economic and/or environmental performance** of agroecological approaches.
- **Enhanced science-policy interfaces** serving to facilitate a faster transition to agroecology.





Topic 1: Determine and assess benefits/impacts and trade-offs of agroecology, and identify best practices

Topic 2: Transform value chains, businesses and policies to facilitate the transition to agroecology

Applicants have to choose one of them





Topic 1: Determine and assess benefits/impacts and trade-offs of agroecology, and identify best practices

Theme 1: Methods and procedures to tackle trade-offs in agroecological production

- Developing and applying methods to describe value/goal conflicts and trade-offs
- Implementing new approaches and tools or modifying and combining existing ones to ensure the integrated assessment of the performance of agroecology
- Defining and testing models for performing environmental, social and economic analyses of positive/negative impacts

Theme 2: Scenario analysis to identify and support the most suitable options to accelerate the adoption of the identified best practices at different spatial and temporal scales

- Generating knowledge/evidence on the contribution of agroecology to the economic sustainability and viability
- Co-designed construction of different scenarios related to identify the long-term ecological and socio-economic implications
- Assess the socio-economic implications of adopting circular and sharing economy principles
- Co-construction of scenarios aiming to contribute to the decision-making of policy makers





Topic 1: Determine and assess benefits/impacts and trade-offs of agroecology, and identify best practices

Theme 1: Methods and procedures to tackle trade-offs in agroecological production

- Developing and applying methods to describe value/goal conflicts and trade-offs
- Implementing new approaches and tools or modifying and combining existing ones to ensure the integrated assessment of the performance of agroecology
- Defining and testing models for performing environmental, social and economic analyses of positive/negative impacts

Theme 2: Scenario analysis to identify and support the most suitable options to accelerate the adoption of the identified best practices at different spatial and temporal scales

- Generating knowledge/evidence on the contribution of agroecology to the economic sustainability and viability
- Co-designed construction of different scenarios related to identify the long-term ecological and socio-economic implications
- Assess the socio-economic implications of adopting circular and sharing economy principles
- Co-construction of scenarios aiming to contribute to the decision-making of policy makers





Topic 2: Explore how agricultural value chains can be transformed and diversified in order to support agroecology transition

Theme 1: Transformation and development of new business models in the value chains to facilitate the agroecological transition

- Consider how new business models could value the social and economic benefits of agroecological products and services
- Study how the benefits of agroecological approaches could be used to contribute to better traceability and certification procedures
- Consider opportunities for new businesses related to the development of new, or the adaptation of existing, machinery
- Increase knowledge on the ways to cope with the requirements of the different stakeholders
- Contribute to develop business models able to collect, process and add value to new crops

Theme 2: Coordination among actors, social innovations and policies to enhance the agroecological transition

- Identify the different actors that could be relevant
- Study how to increase trust between agroecological producers and consumers
- Study adapted and alternative logistics and infrastructures
- Identify and, whenever possible, develop at national or regional level policy, private and market incentives





Topic 2: Explore how agricultural value chains can be transformed and diversified in order to support agroecology transition

Theme 1: Transformation and development of new business models in the value chains to facilitate the agroecological transition

- Consider how new business models could value the social and economic benefits of agroecological products and services
- Study how the benefits of agroecological approaches could be used to contribute to better traceability and certification procedures
- Consider opportunities for new businesses related to the development of new, or the adaptation of existing, machinery
- Increase knowledge on the ways to cope with the requirements of the different stakeholders
- Contribute to develop business models able to collect, process and add value to new crops

Theme 2: Coordination among actors, social innovations and policies to enhance the agroecological transition

- Identify the different actors that could be relevant
- Study how to increase trust between agroecological producers and consumers
- Study adapted and alternative logistics and infrastructures
- Identify and, whenever possible, develop at national or regional level policy, private and market incentives



In both topics



- Address challenges faced by at least 3 countries participating in the partnership
- Follow a co-creation and multi-actor approach with relevant stakeholders (farmers, companies, consumers, citizens, local authorities, etc.) as inspired by the living labs methodology.
- Apply a multidisciplinary approach
- Take into consideration local conditions
- Consider the experience gathered by the organic farming sector
- Connect fundamental research with applied research
- Identify, evaluate, and integrate traditional knowledge in agroecological practices





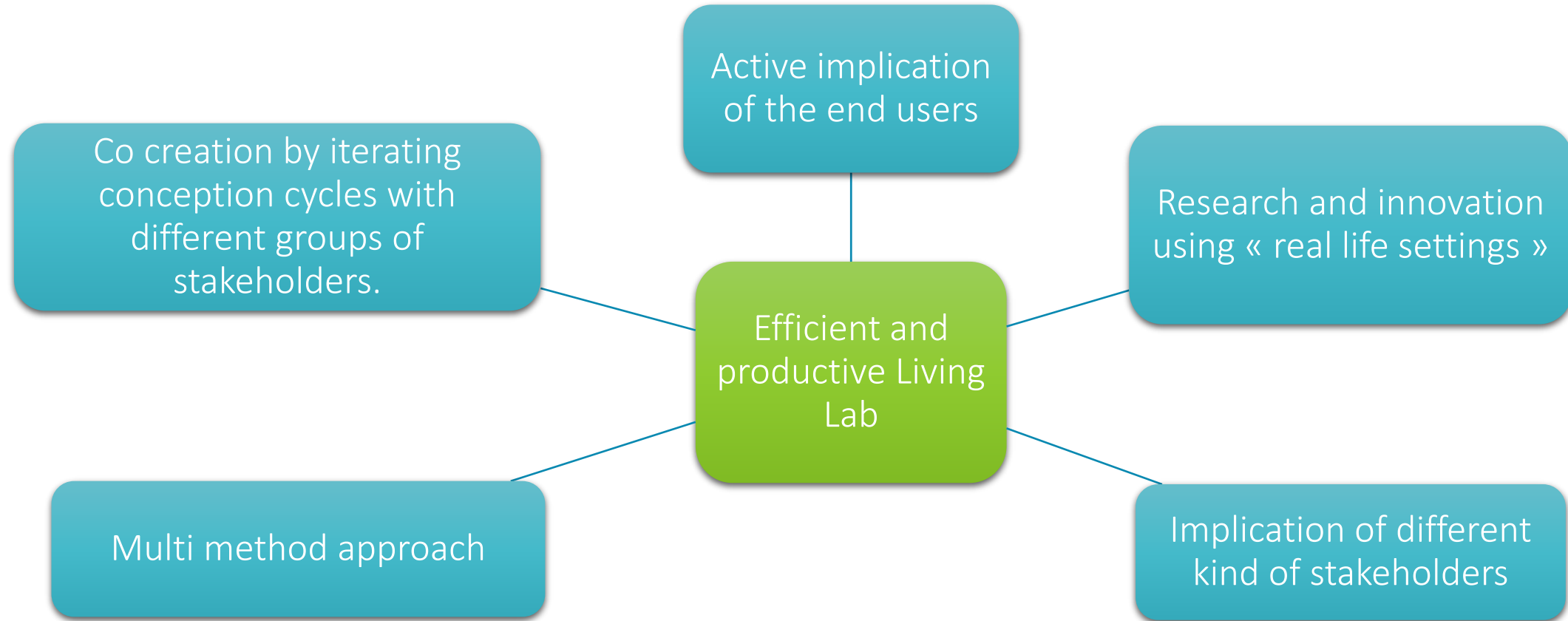
ENOLL's definition of Living Lab

“Living Labs are *open innovation ecosystems* in real-life environments based on a *systematic user co-creation* approach that integrates R&I activities in communities and/or multi-stakeholder environments, *placing citizens and/or end-users at the centre of the innovation process.*”

“The concept ‘Living Lab’ is used for *the organization that innovates according to these principles*, but *also refers to the innovation projects that follow these guidelines* and also links with specific activities, methods and tools within these innovation projects.”



5 keypoints of LL





- Very strong local embeddedness
- Great diversity of their origins, from farms to networks or communities
- Heterogeneity and intensity of the knowledge and innovations required and produced (from practice to policies)
- Different scales: the farm and its immediate environment (network of farms), the territory, or the regional level.





03

Build your consortium

Daniela Piaz Barbosa Leal



© Image Credits

PARTNERING TOOL



The screenshot shows the Agroecology Partnership website. At the top, there is a navigation bar with 'CALL 1 PARTNERING AGROECOLOGY CALL 2'. The 'PARTNERING' link is highlighted with a red box. Below the navigation bar is a header with the Agroecology Partnership logo and a landscape image. The main content area is titled 'WELCOME TO THE SUBMISSION SYSTEM'. It features a section for the '2ND CO-FUNDED CALL OF THE AGROECOLOGY PARTNERSHIP' with the title 'INTEGRATING ENVIRONMENTAL, ECONOMIC AND SOCIAL PERSPECTIVES IN ASSESSING THE PERFORMANCE OF AGROECOLOGY, VALUE-CHAIN AND POLICY IMPLICATIONS'. The call is for pre-proposals, and the submission deadline is 17 February 2025, 14:00h CET. There is also a section for 'CALL DOCUMENTS' with a list of documents including Call Announcement, Annex V Workplan Template, Annex VIII Template Financial Commitment, Annex IX Funder Regulations, CV Template, Example Pre Proposal, and Pre Announcement. A sidebar on the left contains contact information for the Call Office and a submission platform menu with options for Coordinator Registration, Coordinator Login, Partner Login, and Funder Login.

The screenshot shows the Partnering Platform navigation menu. The menu is titled 'PARTNERING' and has two main items: 'POST AN OFFER/REQUEST' and 'LIST OF OFFERS/REQUESTS'. Both items are highlighted with red boxes. The 'POST AN OFFER/REQUEST' item has a right-pointing arrow, and the 'LIST OF OFFERS/REQUESTS' item also has a right-pointing arrow.

PARTNERING PLATFORM

This partnering tool helps you to find cooperation possibilities within the Agroecology calls. It can be used in the following ways:

- [Post a Partner Offer/Request](#)

Please post an entry in the partnering tool, if you are looking for collaboration opportunities in project consortia and would like to offer your expertise. You are also welcome to make a post, if you already have a project idea and are looking for further partners that would like to join you/your consortium. Next to providing your contact details, you should give a brief description of your organization. It is important that you provide some key words describing your field of research/innovation and that you specify your interest and the experience, expertise and know-how you/your organization has to offer in relation to one of the listed call (sub)topics of Agroecology. Please note: The second call has only one topic!

- [Search List of Partner Offers/Requests posted by others](#)

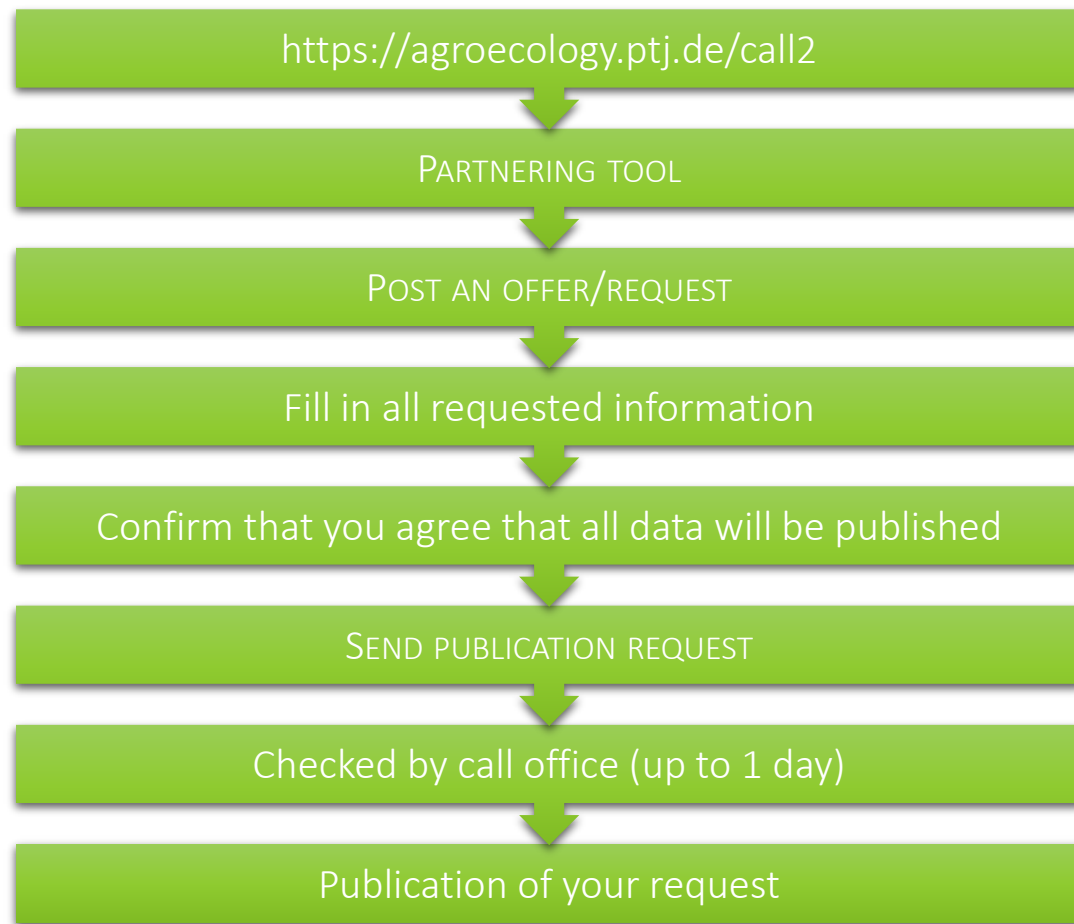
The database can be searched by call topics, keywords and all the other information provided by its users.

Please note:

There will be a plausibility check by the Agroecology Call Secretariat for each of your entries. If the information given passes this plausibility check, which sometimes can take a few days, your request(s) will be published on the page "List of Partner Offers/Requests". Following the publication all information provided by you will be publicly available.



POST AN OFFER OR REQUEST



PARTNERING

- POST AN OFFER/REQUEST >
- LIST OF OFFERS/REQUESTS >

POST AN OFFER OR REQUEST

Type of Post:

Post an Offer
 Post a Request

Contact data

Contact Name:

Email Address:

Name of Organisation/Institution/Company:

Country:

Type of Organisation:

Phone Number:

Project Data

Topic:

Keywords:

Please specify your cooperation interest

Description of your organisation

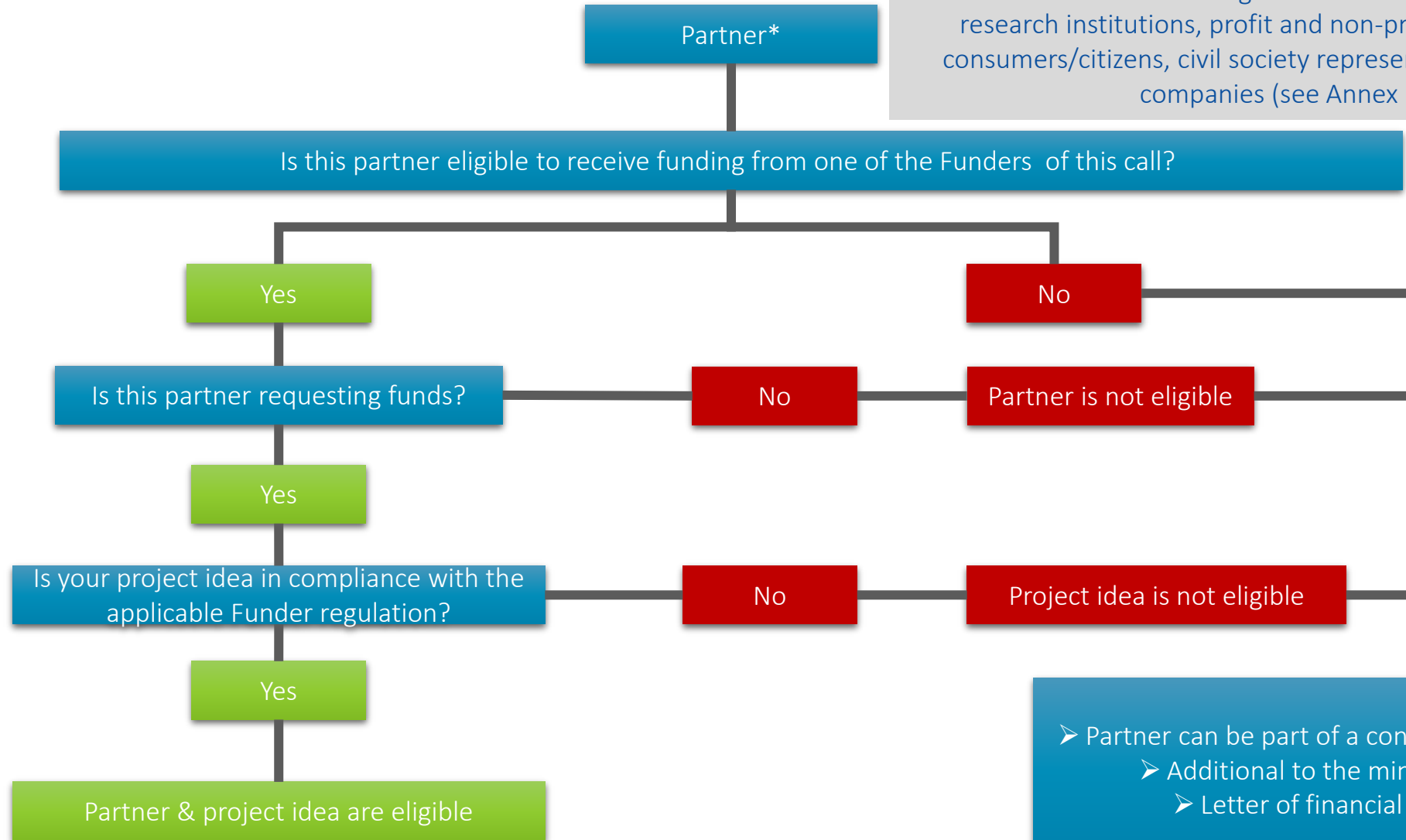
Next Step



BUILD YOUR CONSORTIUM

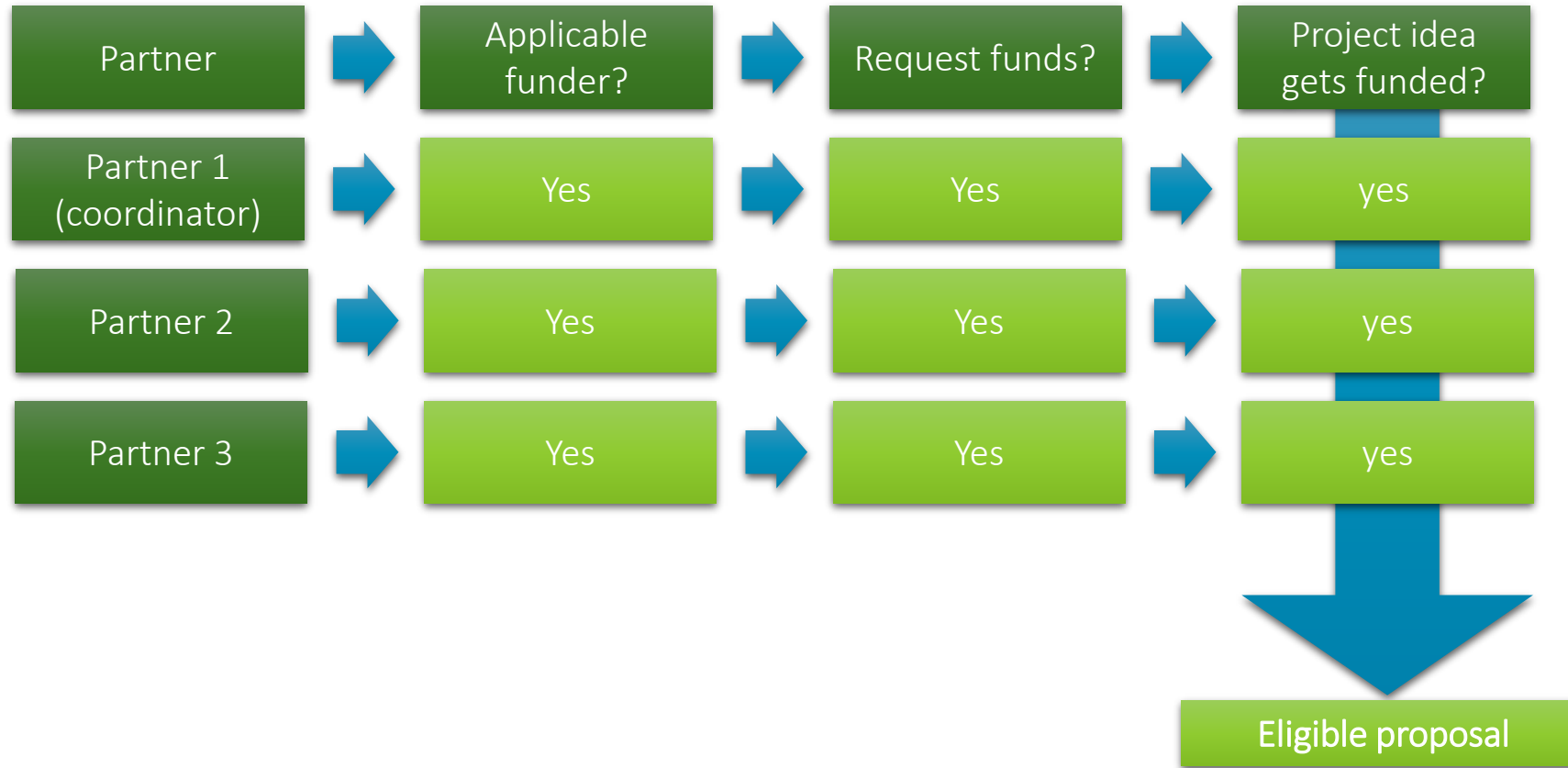


*Universities and other higher education institutions, public research institutions, profit and non-profit organisations, consumers/citizens, civil society representatives and private companies (see Annex IX)

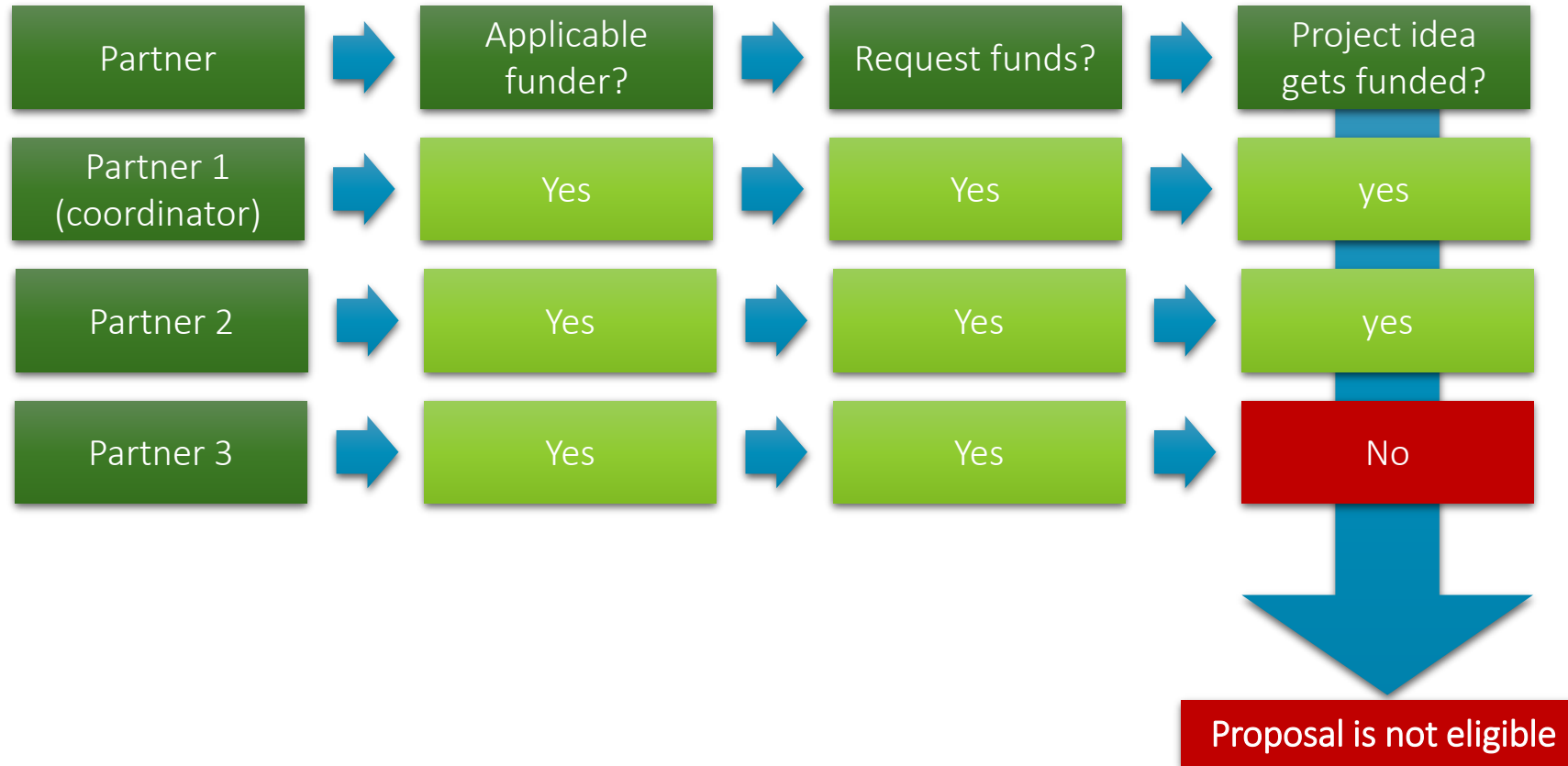


- Partner can be part of a consortium if securing own expenses
- Additional to the minimum number of partners
- Letter of financial commitment is needed

CONSORTIUM - Example



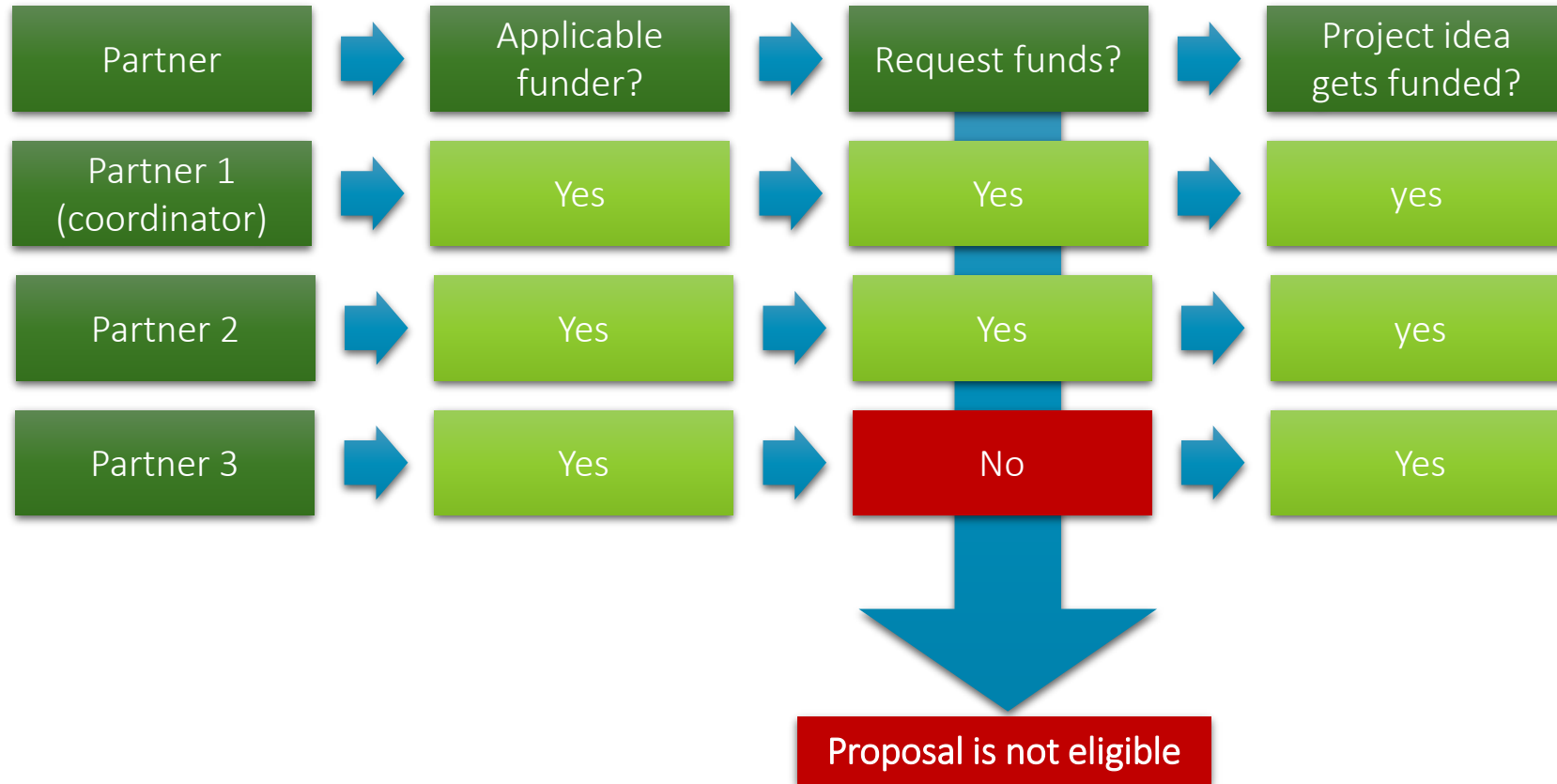
CONSORTIUM - Example



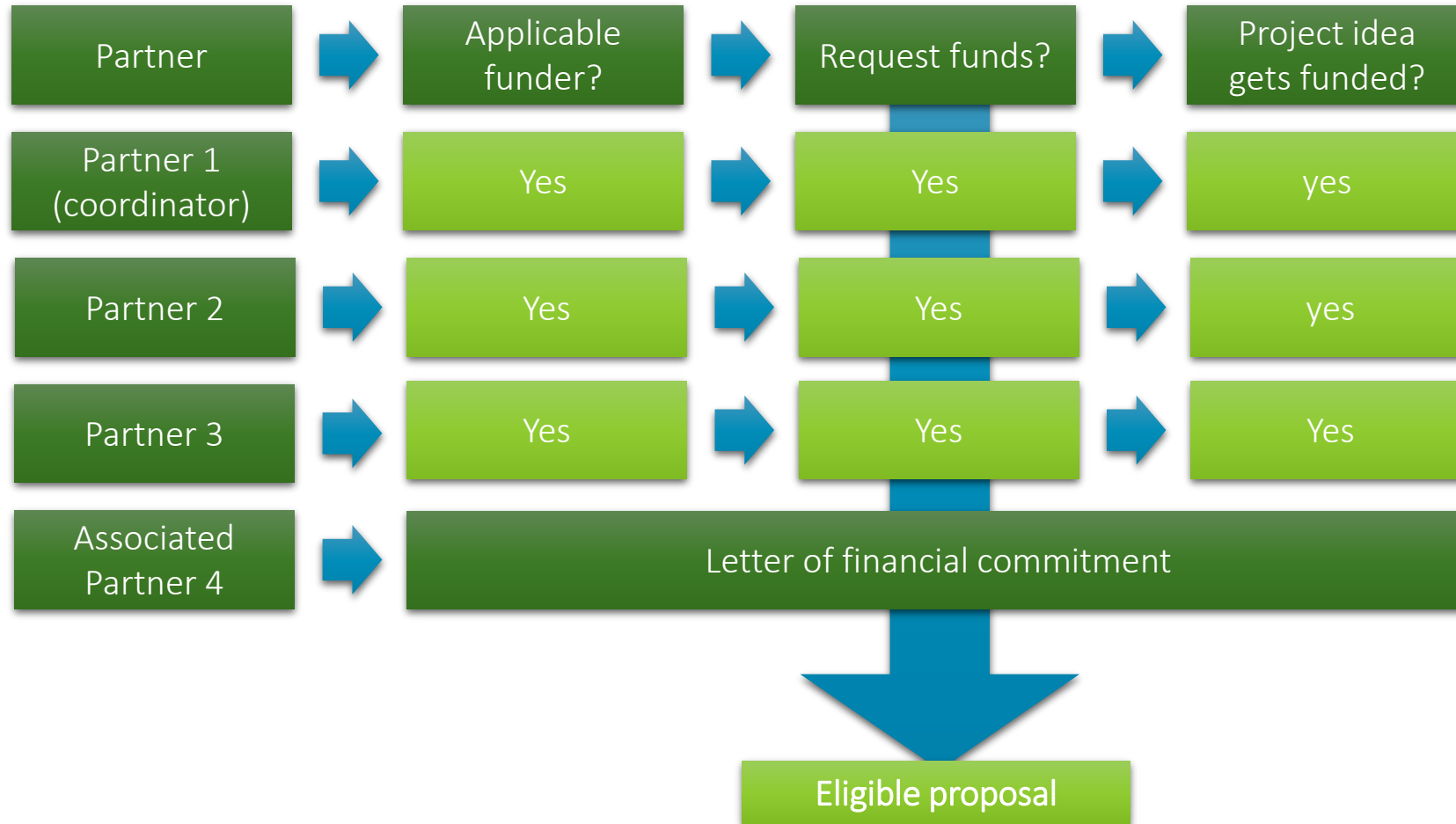
CONSORTIUM - Example



CONSORTIUM - Example



CONSORTIUM - Example





Roles and responsibilities:

- Make sure to meet the Funder regulations and funding modalities of all partners involved.
- Lead the consortium throughout the application procedure + correct proposal submission.
- Act as the central contact point for the consortium.
- Inform the Call Office about any situation that might affect the implementation of the project.
- Ensure to meet deliverables and milestones presented in the proposal.
- Share information with consortium partners.
- Monitoring data and punctual delivery of project reports.

Not responsible for the financial management
→ partners & corresponding Funders



ELIGIBILITY



Criteria	Comment
Proposals must be consistent: Scope + thematic priorities of the Funders	<ul style="list-style-type: none">➤ See chapter 3 (Call objectives and scope)➤ Should not overlap with ongoing or completed projects
Proposals must be written in English, be complete, meet all formal criteria and be submitted via the online submission platform	<ul style="list-style-type: none">➤ Incomplete proposals cannot be submitted → use VALIDATION bar to check for completeness!
Deadlines: Pre proposals - 17 February 2025 2 pm CET See section 5.1 (Step 1 Pre proposal phase) Full proposals - 09 July 2025 2 pm CEST See section 5.2 (Step 2 Full proposal phase)	<ul style="list-style-type: none">➤ Submission of a pre proposal is compulsory➤ Avoid “last minute submission”!➤ Submit/re-submit a preliminary version of the proposal - only the latest version and corresponding file uploads will be considered.
Project duration: min. 24 months / max. 36 months Earliest start date for projects: January 2026 All projects must be completed by September 2029	<ul style="list-style-type: none">➤ Check Annex IX (Funder regulations) for exceptions!



ELIGIBILITY



Criteria	Comment
<p>Consortia: at least 3 eligible partners requesting funding from at least 3 different Members States or Horizon Europe Associated Countries and from Funders who provide funds to the co-funded call.</p> <p>Associated Partners do not count towards this limit.</p> <p>Partners from a single country shall not exceed 60% of the total number of person months allocated to the project.</p>	<ul style="list-style-type: none">➤ Maximum number of partners = 12 (associated partners do not count)➤ No upper limit to the number of partners from the same country - check Annex IX for exceptions➤ The total number of person months per partner has to be included in the partner profiles
<p>Individual researcher affiliated to several organisations cannot request funding from more than one Funder.</p>	<ul style="list-style-type: none">➤ Must declare which partner and organisation within the consortium he/she represents.
<p>Each consortium must be led by a project Coordinator from an organisation eligible for funding from a Funder of this call and requesting funding.</p> <p>The same person cannot act as Principal Investigator of a Coordinator for more than one proposal.</p>	<ul style="list-style-type: none">➤ Some Funders do not allow the same person to participate in more than one proposal per call (Annex IX)





Criteria	Comment
Ethical self-assessment	<ul style="list-style-type: none">➤ Please carefully read the instructions provided by the EC: https://ec.europa.eu/info/funding-tenders/opportunities/docs/2021-2027/common/guidance/how-to-complete-your-ethics-self-assessment_en.pdf
Information from pre proposal is binding, no substantial changes to scope and objectives are allowed	<ul style="list-style-type: none">➤ Administrative adaptations are eligible, subject to approval of call office and funders (see chapter 5.2), e.g. withdraw of a partner between PP and FP phase
Total project costs are by default not restricted, but funders may set a limit per partner in a project	<ul style="list-style-type: none">➤ Carefully check Annex IX to learn more about the maximum funding per partner and specific funder and eligibility of costs

Funder regulations - Annex IX



CONTACT

Call Office
✉ pgj-agroecology-call-office@fz-juelich.de

Nicolas Tinois
✓ +49 2461 61 24 22

Ulrike Ziegler
✓ +49 2461 61 55 66

Silvana Hudjetz
✓ +49 2461 61 859 86

Daniela Piaç Barbosa Leal
✓ +49 2461 61 843 06

SUBMISSION PLATFORM

- COORDINATOR REGISTRATION >
- COORDINATOR LOGIN >
- PARTNER LOGIN >
- FUNDER LOGIN >

CALL DOCUMENTS

- Call Announcement
- Annex V Workplan Template
- Annex VIII Template Financial Commitment
- Annex IX Funder Regulations**
- CV Template
- Example Pre Proposal
- Pre Announcement

AGROECOLOGY PARTNERSHIP

2nd CO-FUNDED CALL

Annex IX Funder regulations

version 1.3 - 06 Dec 2024

Co-funded by the European Union

AGROECOLOGY PARTNERSHIP

Content

FEDERAL MINISTRY FOR AGRICULTURE, FORESTRY, REGIONS AND WATER MANAGEMENT	6
FONDS VOOR INNOVEREN EN ONDERNEMEN	9
RESEARCH AND INNOVATION FOUNDATION	11
INNOVATION FUND DENMARK	13
SIHTASUTUS EESTI TEADISAGENTUUR	14
REGIONAAL- JA PÖLLUMAJANDUSMINISTERRIIM	15
MINISTRY OF AGRICULTURE AND FORESTRY / MAA- JA METSÄTALOUSMINISTERIÖ	16
AGENCE NATIONALE DE LA RECHERCHE	18
PARIS DE LA LOIRE REGIONAL COUNCIL	20
BUNDESMINISTERIUM FÜR BILDUNG UND FORSCHUNG	22
FEDERAL MINISTRY OF FOOD AND AGRICULTURE	24
NEMZETI KÜLTÁSI, FEJLESZTÉSI ÉS INNOVÁCIÓS HIVATAL	25
AUTONOMOUS PROVINCE OF BOLZANO/BOZEN	26
MINISTRY OF AGRICULTURE, FOOD SOVEREIGNTY AND FORESTRY	29
LIEUVOS MOKSLO TARYBA	34
THE MINISTRY OF AGRICULTURE OF THE REPUBLIC OF LITHUANIA	35
MINISTRY OF AGRICULTURE, FISHERIES, FOOD SECURITY AND NATURE	36
THE RESEARCH COUNCIL OF NORWAY	38
FUNDAÇÃO PARA A CIÊNCIA E TECNOLOGIA	40
EXECUTIVE AGENCY FOR HIGHER EDUCATION, RESEARCH, DEVELOPMENT AND INNOVATION FUNDING	42
SLOVAK ACADEMY OF SCIENCES	44
MINISTRSTVO ZA KMETUJSTVO GOZDARSTVO IN PREHRANO	45
AGENCIA ESTATAL DE INVESTIGACION	49
CENTRO PARA EL DESARROLLO TECNOLÓGICO Y LA INNOVACION E.P.E	53
CONSEJERIA DE EDUCACION, CIENCIA Y FORMACION PROFESIONAL - JUNTA DE EXTREMADURA	55
THE SWEDISH RESEARCH COUNCIL FOR ENVIRONMENT, AGRICULTURAL SCIENCES, AND SPATIAL PLANNING	57
GENERAL DIRECTORATE OF AGRICULTURAL RESEARCH AND POLICY	FEHLER! TEXTMARKE NICHT DEFINIERT.
THE SCIENTIFIC AND TECHNOLOGICAL RESEARCH COUNCIL OF TURKEY	59

3 of 59



Read the “Funder regulations” and/or contact the Funder Contact Point (FCP) before submitting a proposal.

- Maximum funding per project - some Funders have budget limitations per project or per partner!
- Project duration – some Funders > 36 months!
- Topics and themes to be funded - not all Funders fund all Topics!
- Exceptions for funding of the research topics based on your national priorities
- Link to funding programme and other relevant information or documents
- Who can apply for funding? – it differs among Funders!
- FCPs are responsible for providing the specific information/rules

**Only proposals complying with both sets of criteria
(general and Funders eligibility criteria)
will advance to the evaluation procedure!!!**



Back at 10:30





04

Call procedure

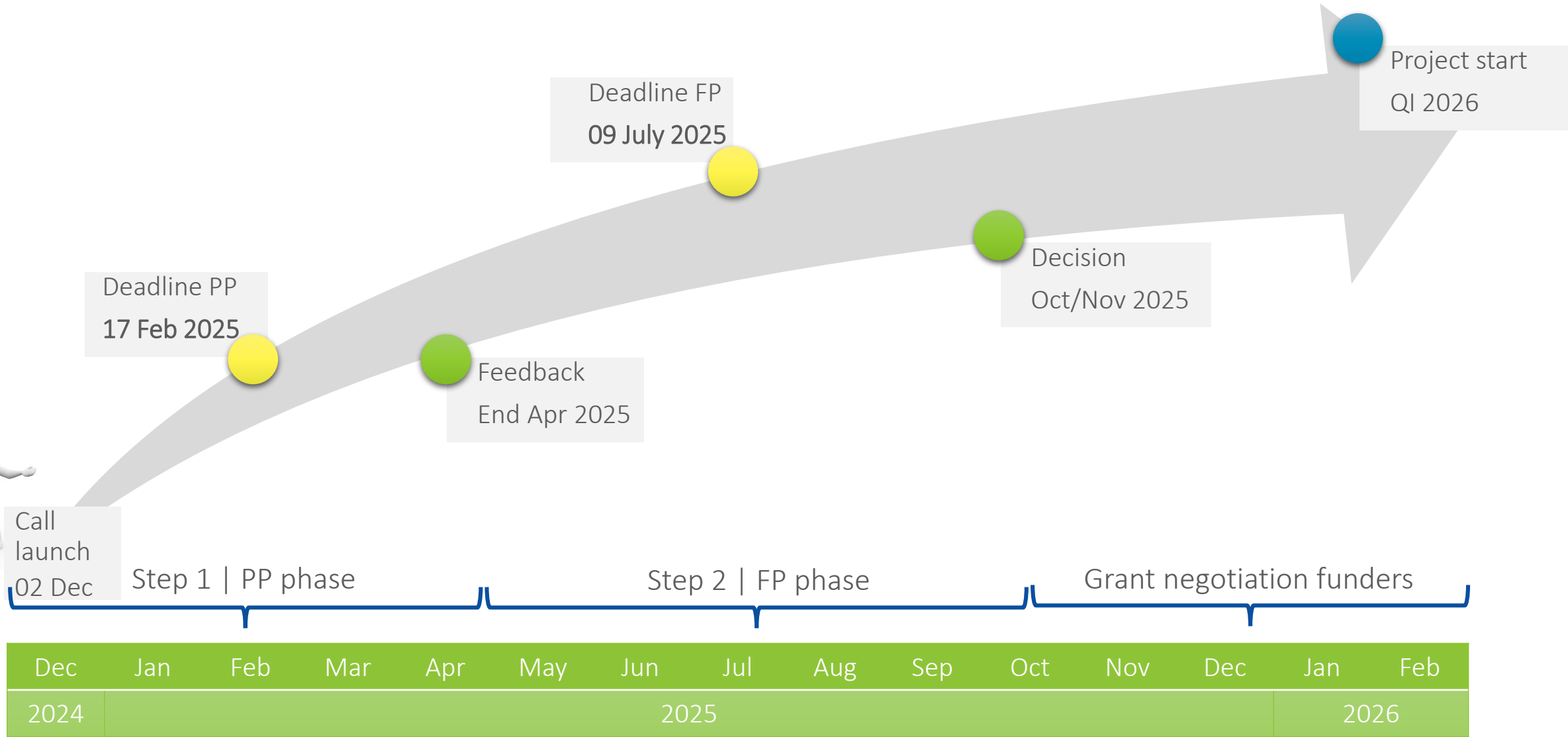
Nicolas Tinois



© Image Credits



Procedure and timeline





PP and FP phases each phase includes

- Eligibility: general check and check by each funder
- Evaluation: conducted by an International Expert Panel
- Selection: Funders board decide on this based on ranking list (and availability of funds)

Grant negotiation process

- **AFTER** positive decision: full proposal was selected for funding by the Funders board
- Done on bilateral level between the individual partner and its respective funder
- Grants will be negotiated and released according to the regulations of the funder a partner receives funds from
- It is anticipated that all partners in one consortium should start at the same time
- Project consortium shall agree on a joint starting date, but start of individual partners in terms of their grants might differ
- *Example: Partner 1 starts 01 Mar 2026, Partner 2 starts 01 Feb 2026 and Partner 3 starts 01 Jan 2026, all partners agreed on a project start 01 Feb 2026, this will be communicated to the public and call office*



Where is the funding coming from?



Funder Board

- Funders participating in this call with an initial indicative budget as outlined in Annex I and IX
- All funders build the so-called Funders Board and are the decision making body of this call

Funding

- This is a co-funded call under the partnership AGROECOLOGY
- **Funds are provided by Funders** for applicants from “their” country/region, only
- **Co-fund from EC:** All Funders will receive a portion of EC-fund to be “invested” in the projects and thus increase their committed budget to this call, this EC portion are not used as direct grant to applicants
- **If your country is not listed**, this means you can participate as associated partner on own resources only
- Funds will be released in case of a positive decision according to the funder specific regulations
- Grant Agreements will be negotiated and finalized between each partner and its funder



How does PP and FP look like?



Section	Limits	Type	PP	FP
PARTNER PROFILE(S)	/	Input mask, free text and pdf upload (CV) – 1 page	X	X
PROJECT DATA	/	Input mask, Tick boxes	X	X
KEYWORDS	5 words	Text field	X	X
LIVING LAB APPROACH	2,000	Text field	X	X
PROJECT SUMMARY	3,500	Text field	X	X
DESCRIPTION OF WORK – Excellence	8,000	Text field	X	X
DESCRIPTION OF WORK – Relevance	8,000	Text field	X	X
DESCRIPTION OF WORK – Implementation	8,000	Text field		X
SCIENCE POLICY INTERFACE COMTRIBUTION	1,000	Text field		x
WORKPLAN	12 pages	Pdf Upload		X
FINANCIAL PLAN	/	Input field/table	X	X
FINANCE COMMENTS	2,000*	Text field		X
ETHICAL SELF ASSESSMENT	/	Tick boxes and text fields	X	x
DATA MANAGEMENT PLAN	1 page	Pdf upload		x
DEC PLAN	1 page	Pdf upload		x

*per partner





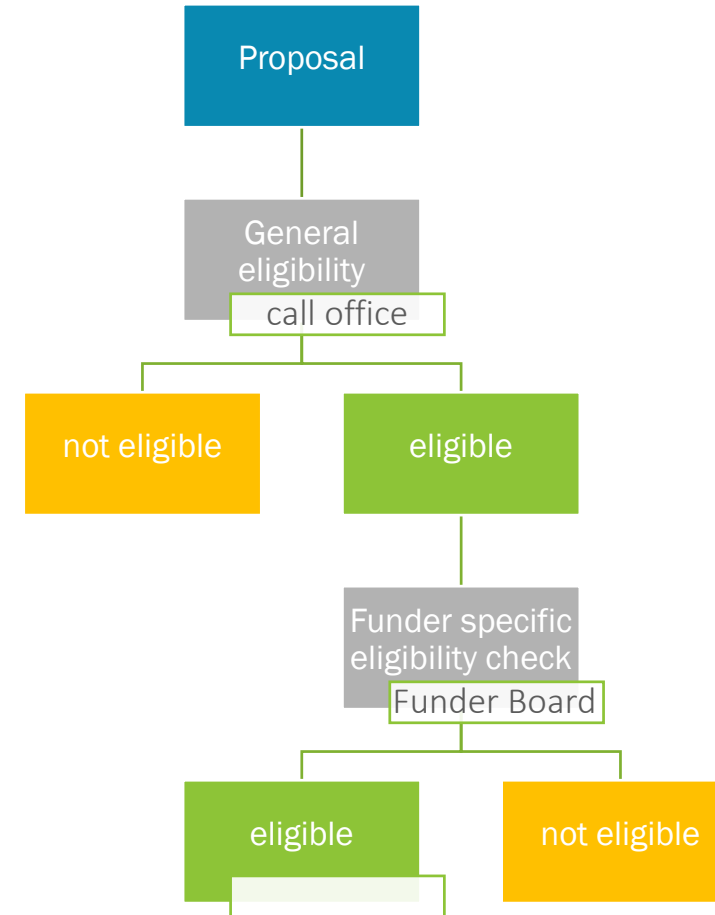
General eligibility check

- Call office according to chapter 4.2

Funder applicable eligibility check

- Each funder according to its rules and regulations as defined in Annex IX
- IMPORTANT: If one partner is not eligible than the entire proposal may be rejected

!Not eligible proposals will be rejected!





General

- All eligible proposals will be peer reviewed by an International Expert Panel (chapter 6.1)
- Each proposal will be peer reviewed by 3 IEP members
- Each proposal will be scored according to evaluation criteria (chapter 6.2 and 6.3)
- Consensus score of each proposal will be elaborated during IEP meeting

Criteria

- PP: Excellence, Impact and Relevance to the scope
- FP: Excellence, Impact and Quality and efficiency of the implementation

Thresholds

- Criterion: 3 out of 5
- Total score: 10 out of 15 (FP)

Scoring

0: The proposal fails to address the criterion or cannot be assessed due to missing or incomplete information.

1: Poor. The criterion is inadequately addressed, or there are serious inherent weaknesses.

2: Fair. The proposal broadly addresses the criterion, but there are significant weaknesses.

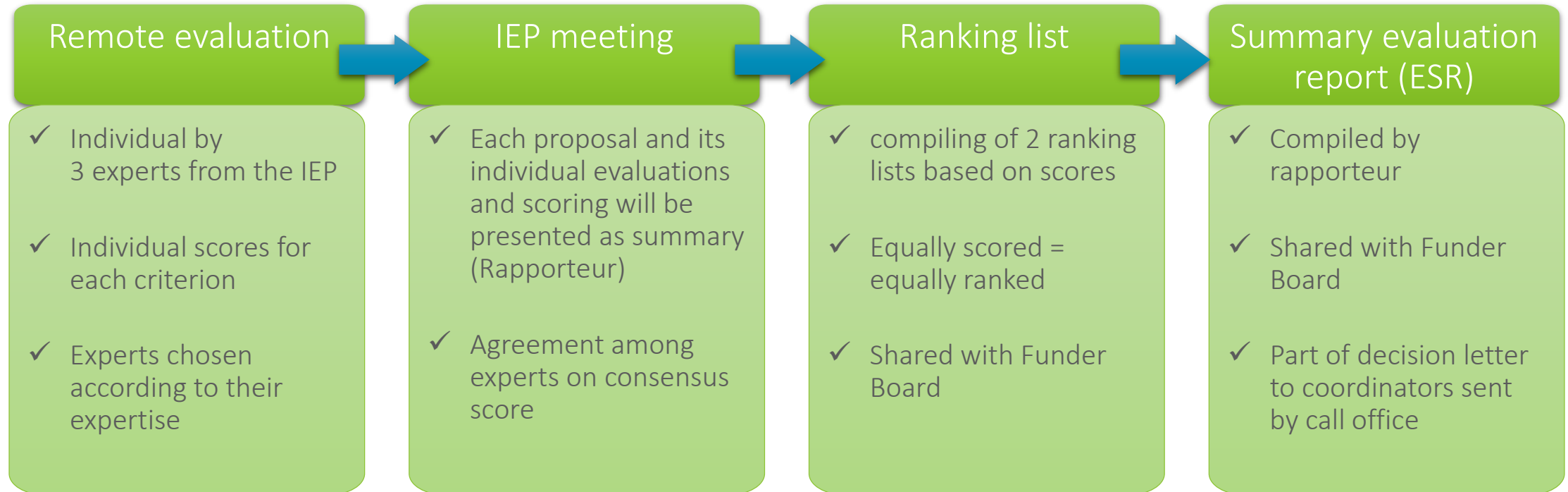
3: Good. The proposal addresses the criterion well, but a number of shortcomings are present.

4: Very Good. The proposal addresses the criterion very well, but a small number of shortcomings are present.

5: Excellent. The proposal successfully addresses all relevant aspects of the criterion. Any shortcomings are minor.



Evaluation





Redress procedure

- Following Article 30 of the REGULATION (EU) 2021/695 OF THE EUROPEAN PARLIAMENT AND OF THE COUNCIL of 28 April 2021
- Redress possible regarding the evaluation procedure
- Scientific or technical judgement of IEP members is irrevocable

General data protection issues

- Strictly followed by GDPR
- See [Privacy Notice](#) on our submission website
- Within the PARTNER PROFILE we ask for permission to use your contact data for further purposes





Funding decision

- Funder Board has the sole responsibility to select proposal
- Decision will be taken based on ranking list and availability of funds
- **Step 1 | PP:** Here Funders Board decides on PP selected to be invited to submit a full proposal
- **Step 2 | FP:** Here Funders Boards decides which FP will be selected for funding, here ranking list must be followed (HE rules for co-funded calls)

Post selection

- Outcome will be communicated to the Coordinator of one proposal
- Decision letters will include ESR
- Following a positive decision each partner of a successful proposal will start the grant negotiation process with its funder





- 1) **Contract negotiation with the applicable funder:** each partner of one selected proposals needs to start the grant negotiation process on bilateral level with its applicable funder
- 2) **Communication and dissemination:** All selected projects will be published on AGROECOLOGY website, all projects shall acknowledge AGROECOLOGY in their communication and dissemination activities and all projects shall make best efforts to publish articles as open access only
- 3) **Collaboration with the partnership AGROECOLOGY:** All projects shall budget the participation to at least 3 joint meetings from AGROECOLOGY (kick-off, mid and end term meeting) and all projects have to submit a mid and end term report to AGROECOLOGY
- 4) **Data management issues:** All projects must implement a DMP in their project
- 5) **Ethics assessment:** Any Ethical issues which have been identified in the full proposal have to be addresses and cleared shortly following selection and justified in mid and end term reports

Where do I find all information | CALL ANNOUNCEMENT



- 1) Preamble
- 2) Expected impacts of the 2nd AGROECOLOGY call
- 3) Call objectives and scope
- 4) Funding modalities and who can apply
- 5) Co-funded call procedure
- 6) Evaluation
- 7) Selection
- 8) Redress procedure
- 9) General data protection issues
- 10) Obligations of the funded projects
- + 12 Annexes





05

Submission Tool

Ulrike Ziegler



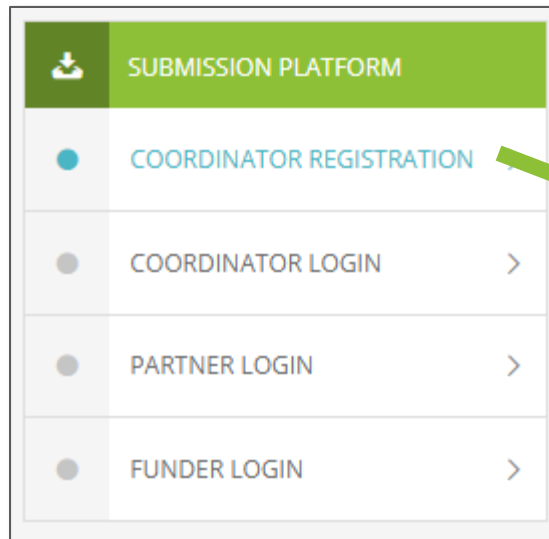
© Image Credits

COORDINATOR REGISTRATION AND LOG IN



Registration

- Appoint a coordinator to get access to the submission platform
- Click **COORDINATOR REGISTRATION**



AGROECOLOGY PARTNERSHIP

CALL 1 | PARTNERING | AGROECOLOGY | CALL 2

AGROECOLOGY CALL 2

CONTACT

Call Office
pj-agroecology-call-office@fz-juelich.de
Nicolas Tinois
+49 2461 61 24 22
Ulrike Ziegler
+49 2461 61 55 66
Silvana Hudjetz
+49 2461 61 859 86
Daniela Piaç Barbosa Leal
+49 2461 61 843 06

WELCOME TO THE SUBMISSION SYSTEM

2ND CO-FUNDED CALL OF THE AGROECOLOGY PARTNERSHIP

"INTEGRATING ENVIRONMENTAL, ECONOMIC AND SOCIAL PERSPECTIVES IN ASSESSING THE PERFORMANCE OF AGROECOLOGY. VALUE-CHAIN AND POLICY IMPLICATIONS"

THE CALL FOR PRE PROPOSALS IS NOW OPEN!

REGISTER [HERE](#) FOR THE WEBINAR ON 13 DECEMBER 2024 FROM 9:00 TO 12:00 CET.

The call announcement and supporting documents with further information of the call can be found under "CALL DOCUMENTS" on the left-hand side of this page. Please check on regular basis for updates of the documents as some information are preliminary. Updates will be also announced here.

Current version of the call announcement: **v1.3 06 Dec 2024**

Current version of the Funder regulations: **v1.3 06 Dec 2024***

***Important correction in the Austrian regulations**

A webinar for applicants will be hosted on 13 December 2024 from 09:00 to 12:00 CET. The webinar will be recorded and FAQs provided.

Deadline for pre proposal submission is 17 February 2025, 14:00h CET.

Deadline for full proposal submission is 09 July 2025, 14:00h CEST.

The submission of a pre proposal is compulsory to submit a full proposal. Full proposal is on invitation only, subject to a positive selection of your pre proposal.

Pre proposals can be submitted via the submission system and by the coordinator of a pre proposal only. Pre proposals by other means are not accepted and will be rejected. To submit a pre proposal, a coordinator of your consortium needs to be appointed who will then register to the submission platform (COORDINATOR REGISTRATION) and will then invite all partners to the pre proposal.



COORDINATOR REGISTRATION AND LOG IN



Registration

- Appoint a coordinator to get access to the submission platform
- Click **COORDINATOR REGISTRATION**
- Fill in all requested data
- You will receive an activation link from: ptj-agroecology-call-office@fz-juelich.de
- Follow this link to activate your account for proposal submission

COORDINATOR REGISTRATION

Please register with your name, e-mail address and choose a login name.

First name

Last name

Email

Login name

Password Repeat password

Passwords must contain an uppercase character, a lowercase character, a base digit (0 through 9) and a nonalphanumeric character ([!@#%&*~<>{}|+*]).



COORDINATOR – ADD PARTNERS



SUBMISSION PLATFORM

- WELCOME >
- ACCOUNT >
- COORDINATOR >
- PARTNERS** >

PARTNER LIST

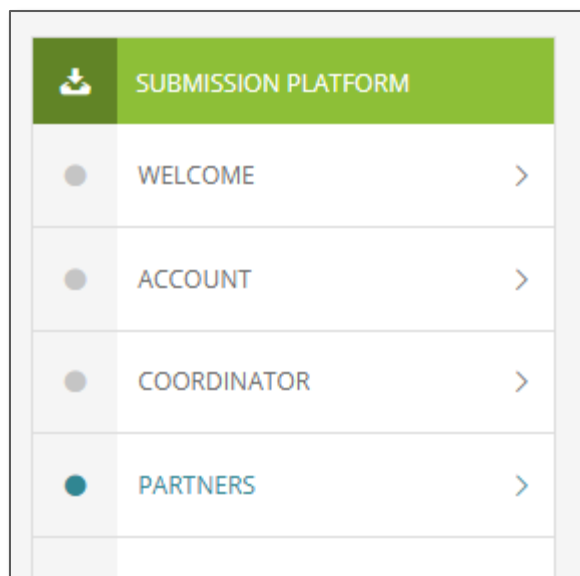
LIST OF PARTNERS, INCLUDING THE PROJECT COORDINATOR:

Organisation	Contact name	Organisation type	Nat. reg.	Country	
Institution of witchcraft	Esmerelda Weatherwax	Consumer/ citizen	✓	Slovakia	
Institution of witchcraft	Nanny Ogg	Civil society representative		other (UK)	
	Magrat Garlick		✗		

[+ Add a new partner](#)



COORDINATOR – ADD PARTNERS



ADD A NEW PARTNER

[← back](#)

Save * is required for submission

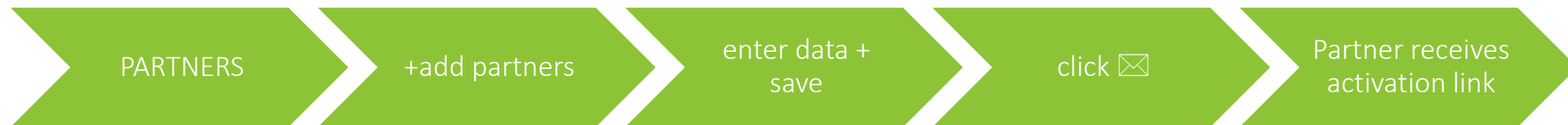
Contact data

First name * <small>Max. 150 characters</small>	Family name * <small>Max. 150 characters</small>
<input type="text"/>	<input type="text"/>
Login name *	Email address *
<input type="text"/>	<input type="text"/>

Save



COORDINATOR – ADD PARTNERS



SUBMISSION PLATFORM

- WELCOME >
- ACCOUNT >
- COORDINATOR >
- PARTNERS >**

PARTNER LIST

LIST OF PARTNERS, INCLUDING THE PROJECT COORDINATOR:

Organisation	Contact name	Organisation type	Nat. reg.	Country	
Institution of witchcraft	Esmerelda Weatherwax	Consumer/ citizen	✓	Slovakia	
Institution of witchcraft	Nanny Ogg	Civil society representative		other (UK)	
	Magrat Garlick		✗		

[+ Add a new partner](#)




SUBMISSION TOOL AND HOW IT WORKS



General

- Information of each section in Annex II (pre proposals) and Annex IV (full proposals) and in submission system in each section
- Free text fields (formatting and inclusion of figures only possible for SUMMARY, LIVING LAB APPROACH, DESCRIPTION OF WORK)
- Tick boxes
- Radio buttons
- Dropdowns
- Uploads of pdf files and figures
- Look at the current version of your proposal: **DOWNLOAD**
- Check for completeness: **VALIDATION**

 SUBMISSION PLATFORM
<input checked="" type="radio"/> WELCOME >
<input type="radio"/> ACCOUNT >
<input type="radio"/> COORDINATOR >
<input type="radio"/> PARTNERS >
<input type="radio"/> PROJECT DATA >
<input type="radio"/> KEYWORDS >
<input type="radio"/> LIVING LAB APPROACH >
<input type="radio"/> PROJECT SUMMARY >
<input type="radio"/> DESCRIPTION OF WORK >
<input type="radio"/> ETHICAL SELF-ASSESSMENT >
<input type="radio"/> FINANCIAL PLAN >
<input type="radio"/> LETTER OF COMMITMENT(S) >
<input type="radio"/> LITERATURE REFERENCES >
<input type="radio"/> FIGURES >
<input type="radio"/> DOWNLOAD >
<input type="radio"/> VALIDATION >
<input type="radio"/> SUBMISSION >



Example free text field – PROJECT SUMMARY



Free text fields

- On top description of section
- max. number of characters, here 3,500
- Text field with some option for formatting (e.g. bold/italic, center,)
- Do not forget to save data!
- You can include up to 3 or 6 (pre proposals/full proposals) figures in your proposal to underline your ideas

PROJECT SUMMARY

Please provide your project summary. This summary might be used for communication and dissemination activities should your project be selected for funding. Please make sure that it is publishable.

• This information is required for submission.

✓ Save

Max. 3500 characters

← → **B** *I* U ~~ABC~~ ^{x²} _{x₂} [List Icons]

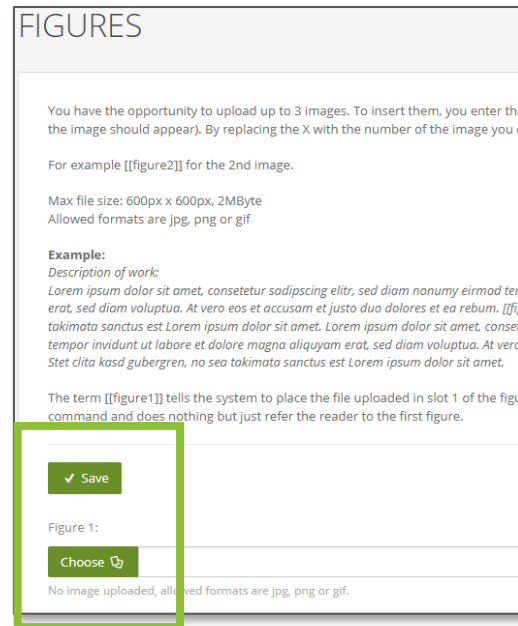
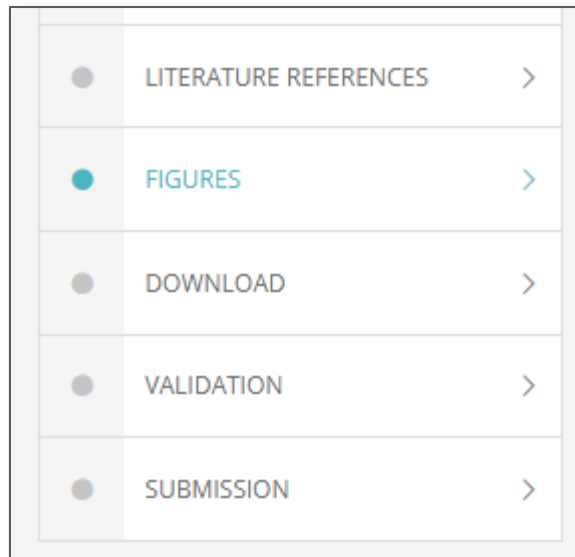
Wyrd Sisters

The wind howled. Lightning stabbed at the earth erratically, like an inefficient assassin. Thunder rolled back and forth across the dark, rain-lashed hills. The night was as black as the inside of a cat. It was the kind of night, you could believe, on which gods moved men as though they were pawns on the chessboard of fate. In the middle of this elemental storm, a fire gleamed among the dripping furze bushes like the madness in a weasel's eye. It illuminated three hunched figures. As the cauldron bubbled, an eldritch voice shrieked: 'When shall we three meet again?' There was a pause. Finally, another voice said, in far more ordinary tones: 'Well, I can do next Tuesday.'





How to include figures in the free text fields



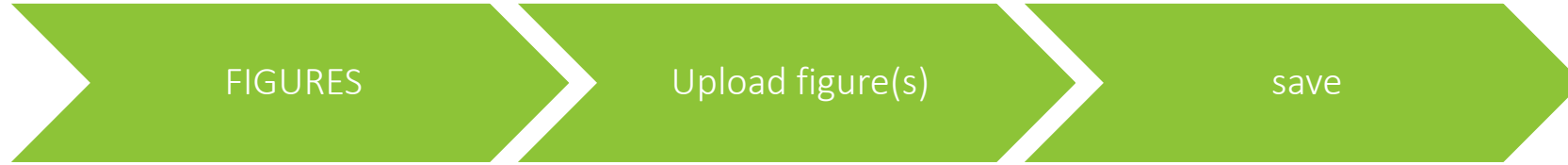
Upload figure(s)

- File path will always be `C:\fakepath\name_of_figure.jpg`
- Pay attention to correct size: 600x600 pixel
- Adjust size of figures by adjusting the size of figure: the lower the pixel x pixel, the smaller a figure will get
- Use suitable programs to adapt your figures to the correct pixel size, e.g. paint





How to include figures in the free text fields



- LITERATURE REFERENCES >
- FIGURES >**
- DOWNLOAD >
- VALIDATION >
- SUBMISSION >

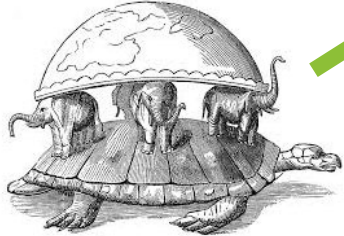

✓ Save

Figure 1:

Choose

Image uploaded successfully.

UPLOADED FIGURE 1:

Placeholder:	[[figure1]]
	 Delete file

Uploaded figure



How to include figures in the free text fields



✓ Save

Max. 3500 characters

← → **B** *I* U ~~S~~ x^2 x_2 ☰ ☱ ☲ ☳

Wyrd Sisters

The wind howled. Lightning stabbed at the earth erratically, like an inefficient assassin. Thunder rolled back and forth across the dark, rain-lashed hills. The night was as black as the inside of a cat. It was the kind of night, you could believe, on which gods moved men as though they were pawns on the chessboard of fate. In the middle of this elemental storm, a fire gleamed among the dripping furze bushes like the madness in a weasel's eye. It illuminated three hunched figures. As the cauldron bubbled, an oldritch voice shrieked: 'When shall we three meet again?' There was a pause. Finally, another voice said, in far more ordinary tones: 'Well, I can do next Tuesday.'

[[figure1]]

Figure1: Graphic showing the discworld.

command
[[figure1]]



How to include figures in the free text fields



DOWNLOAD

Type in command
[[figure1]]

save

300x200 pixel

PROJECT SUMMARY

Wyrd Sisters

The wind howled. Lightning stabbed at the earth erratically, like an inefficient assassin. Thunder rolled back and forth across the dark, rain-lashed hills. The night was as black as the inside of a cat. It was the kind of night, you could believe, on which gods moved men as though they were pawns on the chessboard of fate. In the middle of this elemental storm, a fire gleamed among the dripping furze bushes like the madness in a weasel's eye. It illuminated three hunched figures. As the cauldron bubbled, an eldritch voice shrieked: 'When shall we three meet again?' There was a pause. Finally, another voice said, in far more ordinary tones: *'Well, I can do next Tuesday.'*

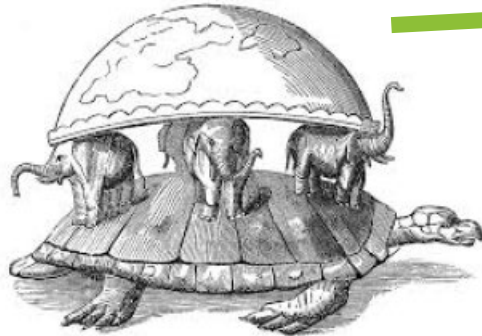


Figure1: Graphic showing the discworld.

How to include figures in the free text fields



PROJECT SUMMARY

Wyrd Sisters

The wind howled. Lightning stabbed at the earth erratically, like an inefficient assassin. Thunder rolled back and forth across the dark, rain-lashed hills. The night was as black as the inside of a cat. It was the kind of night, you could believe, on which gods moved men as though they were pawns on the chessboard of fate. In the middle of this elemental storm, a fire gleamed among the dripping furze bushes like the madness in a weasel's eye. It illuminated three hunched figures. As the cauldron bubbled, an eldritch voice shrieked: 'When shall we three meet again?' There was a pause. Finally, another voice said, in far more ordinary tones: *'Well, I can do next Tuesday.'*



Figure1: Graphic showing the discworld.



Budget of one proposal

FINANCIAL PLAN

- Here you fill in the requested funding per partner in the given cost categories as well as the own contribution
- Data needs to be filled in by coordinator on behalf of all partners!!
- Unit = k€ without decimals! 1,000 € = 1 k€
- Check Annex IX for funder specific regulation on each cost item, in case of doubts, contact them!
- Associated partners: here you cannot fill in any requests for funding, but provide information on own contribution

Organisation name	Personnel	Travel	Consumables / Equipment	Subcontracts	Other	Requested Funding	Total Own Contribution	Total Costs
Institution of witchcraft	<input type="text"/>	<input type="text"/>	<input type="text"/>	<input type="text"/>	<input type="text"/>	0	0	0
Overhead	<input type="text"/>	<input type="text"/>	<input type="text"/>	<input type="text"/>	<input type="text"/>			
	<input type="text"/>	<input type="text"/>	<input type="text"/>	<input type="text"/>	<input type="text"/>			





Budget of one proposal

FINANCE COMMENTS (full proposal only)

- Done by coordinator on behalf of all partners!!
- Description of each cost category/partner
- Check Annex IX for funder specific regulation on each cost item

BRIEF DESCRIPTION

Please enter a brief description regarding your costs:

Personnel

Travel

Consumables / Equipment

Subcontracts

Brief Description (max. 2000 characters)

Name of the organisation

Name of the organisation





Editing partner profiles



Partner profiles

- Coordinators are able to edit partner profiles from all partners in one proposal
- **ATTENTION:** The following declarations are only visible for each partner and cannot be confirmed by the coordinator on its behalf: Awareness of the Funder regulations and Privacy Policy

Declaration

Funder regulations *

I am aware of my funders' regulations (see call announcement).

Privacy Policy *

I have read the notes on [privacy](#) and accept them.

PARTNER LIST

LIST OF PARTNERS, INCLUDING THE PROJECT COORDINATOR:

Organisation	Contact name	Organisation type	Nat. reg.	Country	
Institution of witchcraft	Esmerelda Weatherwax	Consumer/ citizen	✓	Slovakia	
Institution of witchcraft	Nanny Ogg	Civil society representative		other (UK)	
	Magrat Garlick		✗		

Here you can check if declarations are ticked

Here you can edit partner profiles





LETTER(S) OF FINANCIAL COMMITMENTS

- Obligatory for partners participating on own resources
- Template provided (Annex VIII)

LITERATURE REFERENCES

- Use to include all your citations from project description
- Take care of consistent numbering with the text

**Do not use any of those menus for additional not needed/allowed uploads,
e.g. add. CVs or add. pages of work plan, we will check on this
and this may result in a non-eligible proposal**





06

FAQs

Entire team



© Image Credits



06

Closure

Nicolas Tinois



© Image Credits

CLOSURE



Following information of the webinar will be available soon

- ✓ Recording
- ✓ Presentation
- ✓ Questions and answers of the chat (without names)

<https://agroecology.ptj.de/call2>

ptj-agroecology-call-office@fz-juelich.de

Follow
AGROECOLOGY
Partnership



Subscribe to
our newsletter

THANK YOU !

Keep up to date

Contact:

Call office

ptj-agroecology-call-office@fz-juelich.de



Team-up and
unlock the transition to agroecology
so that farming systems are resilient,
productive and prosperous, place
sensitive, as well as climate,
environment, ecosystem,
biodiversity and
people-friendly by 2050

